



# CROSSWORD PUZZLE



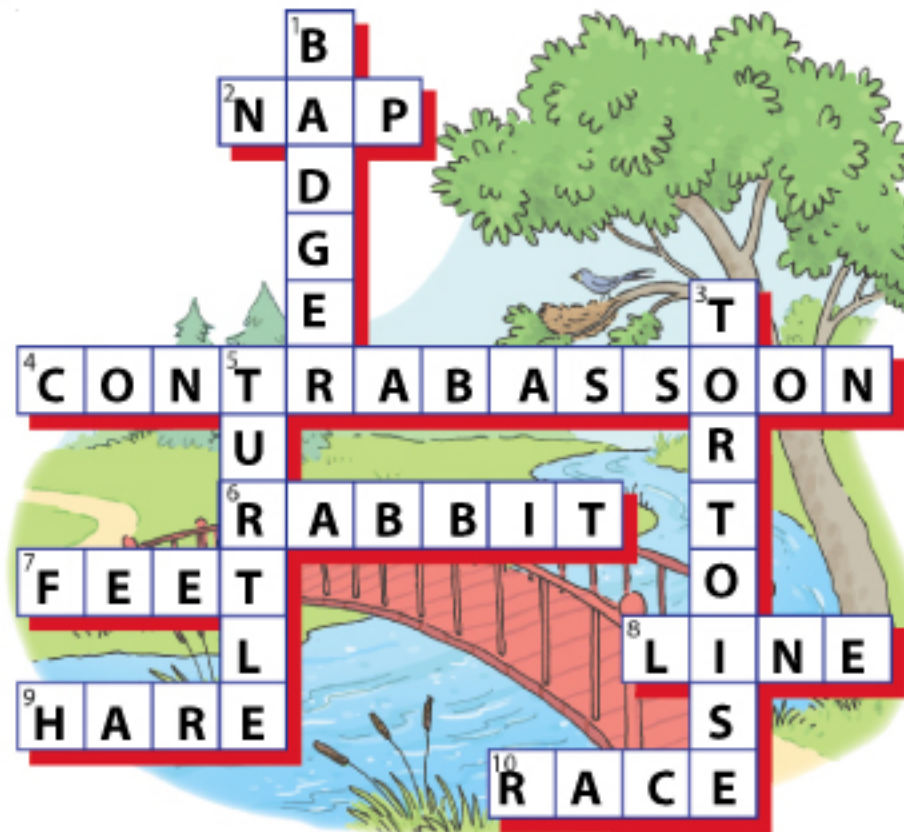
## ACROSS

- Hare loses the race because he takes a \_\_\_\_.
- The instrument that represents the tortoise.
- Sometimes mistakenly called a hare.
- Tortoise has very sore \_\_\_\_.
- At the end of the race there is a finish \_\_\_\_.
- Races against tortoise.
- Has a start & finish line.



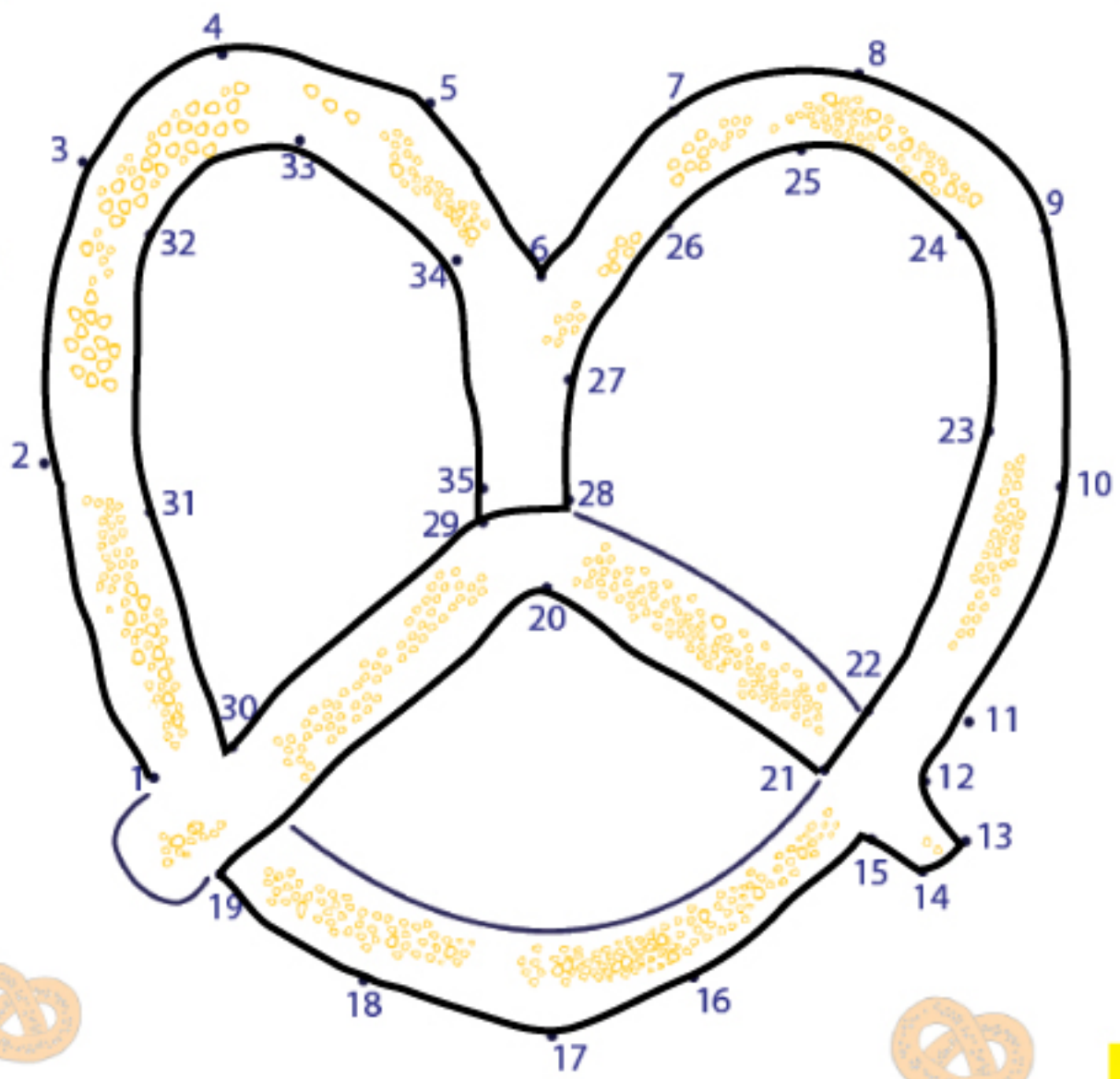
## DOWN

- He was reading his newspaper.
- He races against Hare.
- Sometimes mistakenly called a tortoise.





# DOT - TO - DOT

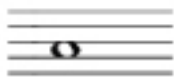




# NOTES AND FRACTIONS



Music is divided into measures. Each measure is divided equally into parts. When composers want sound, they write "notes"; when they want silence, they write "rests."



The whole **note** lasts for 4 beats, or the whole measure.



The whole **rest** means silence for 4 beats.



The half **note** lasts for 2 beats, or one half of the measure.

The half **rest** means silence for 2 beats.



The quarter **note** lasts for 1 beat, or one quarter of the measure.



The quarter **rest** means silence for 1 beat.



# TIME SIGNATURES



The time signature at the beginning of the music tells us how many beats are in a measure.



4 beats in each measure

each beat = a quarter note

Write notes and rests, matching the colors.





# WORD JUMBLE



Re-arrange the letters to make words. To solve the puzzle at the bottom, unscramble the letters in the circles and fill in the blanks.

CRAE

STAF

SPOU

WOLS

CHERN

OONIN

R A C E

F A S T

S O U P

S L O W

F R E N C H

O N I O N

**G R E A T M U S I C I S C O O L !**